



**Baltimore Woods
Nature Center**
Nature in your hands

Classroom and Fieldtrip Environmental Education Programs



Teacher Information & Program Descriptions

2009—2010

*There is no place like here, no time like now to enjoy,
understand and protect the natural world*

Welcome to Baltimore Woods Nature Center!

CONTACT INFORMATION

Address Baltimore Woods
Nature Center, Inc.
4007 Bishop Hill Road
P.O. Box 133
Marcellus, NY 13108

Phone 315.673.1350

Fax 315.673.3671

Website
www.baltimorewoods.org

Email
Katie@baltimorewoods.org

Who is Baltimore Woods Nature Center?

Baltimore Woods Nature Center (BWNC) is a not-for-profit (501(c)(3)) environmental education organization headquartered at Baltimore Woods in Marcellus, New York, about 12 miles west of Syracuse, NY. BWNC offers a newly constructed Nature Interpretation Center, 182-acre nature preserve, and six miles of trails at Baltimore Woods for public use.

Mission...

Baltimore Woods Nature Center transforms individuals and communities through place-based education. This transformation is achieved through frequent positive experiences that cultivate a strong sense of wonder. BWNC accomplishes this through teaching and interactive programs that take place at Baltimore Woods as well as in urban, suburban, and other rural landscapes of Central New York.

Directions to Baltimore Woods



Please visit www.mapquest.com for directions to 4007 Bishop Hill Road Marcellus, NY 13108.

Why Choose BWNC Programs for your Class?

Nature is essential to children's overall development—emotionally, intellectually, physically, and socially. Our children's detachment from nature has gained national attention since Richard Louv's recent book, *Last Child in the Woods: Saving Our Children from Nature Deficit Disorder*. Research has shown that children are smarter, cooperative, happier and healthier when

Students score higher on standardized tests when natural environments are integral to schools' curricula.

TABLE OF CONTENTS

Program Experiences	3
Teacher Information	4
Classroom and Field Trip Programs	5—9
Primary (grades K - 2)	5, 6
Elementary (grades 3 - 5)	6—9
Intermediate (grades 6 - 8)	7—9
Create-a-Program	9
New York State Learning Standards	10
Program Registration Form	11

they have frequent and varied opportunities for free and unstructured play in the outdoors. BWNC's programs are designed with this in mind—blending positive interactive inquiry-based nature activities with school curricula and NYS learning standards.

To learn more about the importance of children and their connection to nature, visit www.cnaturenet.org.

Program Experiences



"Our field trip offered what the text and the classroom missed ."
Morgan Road Elementary



In Your Classroom

BWNC programs can range from 30 to 90 minutes in length and can be designed to fit the needs of your grade and classroom. Presentations include visuals like PowerPoint presentations and offer hands-on/ minds-on materials for students such as:

- Animal mounts
- Live animals
- Natural artifacts
- Activities or games related to the topic

Field Trips

Take a field trip to Baltimore Woods and experience our on-site programming! Programs in this brochure can take place at Baltimore Woods in the John A. Weeks Interpretive Center and outdoors in over 180 acres of our nature preserve. During your visit, students can explore hiking trails, streams and ponds. Classes can stay for lunch in the pavilion and picnic area as well as a large indoor program room with indoor bathrooms.

How do BWNC programs fit with the New York State Learning Standards?

BWNC has developed their nature education programs to correlate with the most current NYS learning standards. BWNC provides opportunities for students to have direct experiences with the living environment by bringing nature education into the classroom. Whether talking about the life cycle of the red-winged blackbird, pond ecology, or photosynthesis, the staff at BWNC introduces complex scientific concepts to students with interactive inquiry-based curriculum.

Visit our website at

www.baltimorewoods.org

Teacher Information

Program Logistics

Program Length — BWNC programs can range from 30 to 90 minutes in length and can be designed to fit the needs of your grade and classroom.

Transportation — Transportation to the program location is the responsibility of the teacher or school.

How to Arrange for a Program

1. Fill out the program registration form and send to BWNC at least one month in advance of desired program date. Registrations are processed on a first come, first serve basis. Submission three months in advance is recommended and encouraged, due to demand. The form can be submitted via email, fax, or hardcopy mail.
2. Your program confirmation will be sent via email within one week of BWNC's receipt of your program registration form.
3. Optional (not required): If your program is outdoors, consider arranging for chaperones so that there is at least one adult for every 12 students. Teachers are responsible for supervision at all times.

Preparing for an Outdoor Program

Students, teachers, and chaperones should dress according to the weather. In inclement weather outdoor activities may be shortened, but unless the weather is severe we will still go outside. Please have students wear hats, gloves, boots, and coats in the cold weather and rain gear when needed. Clothes and apparel may get dirty or wet on outdoor programs—please advise your students of this.

Cancellation Policy

If you decide to cancel your program, you must do so two weeks in advance of the program date or you will be charged a \$35 processing fee. In the case of questionable weather, BWNC will determine if the program should be cancelled. BWNC honors school snow cancellation policies.

Costs

BWNC classroom programs and fieldtrips to Baltimore Woods cost \$4 per student per program hour (for the first hour), and \$3 per student for each additional consecutive hour of programming. A \$25 travel fee applies to all off-site programs. All programs have a minimum cost of 20 students. The maximum class size for one program is 30 students. Classes exceeding 30 students will be divided into two classes and charged for two class programs. This helps ensure the best quality experience for your students. Material fees may apply for some programs.

Discounts

Multiple program discounts are available.

- Coordinate with other teachers and save! For multiple programs at the same location on the same day, only one off-site fee (\$25) applies.
- Sign up for two or more programs in one day! This applies to both on- and off-site programs. Cost is \$4 per student per program hour for the first hour, and \$3 per hour each additional consecutive program hour.

Financial Aid

Financial aid BWNC's environmental education programs is available from a variety of resources. Here are some resources:

- **Target Field Trip Grants** will be awarded to 5,000 educators nationwide with a grant of up to \$800 to take students on exciting, enriching field trips. Apply at Target.com/fieldtrips.
- **Exploratory and Science Enrichment Program** at Oswego County BOCES offers partial reimbursement for BWNC programs. To see if your district is a participant and for more information, go to www.oswegoboces.org/profservices/artsined/enrich.asp.
- **Parent-Teacher Associations (PTAs)** may help supplement costs for BWNC programs.
- **Need Based Scholarships** may be awarded. Contact Baltimore Woods Nature Center for more information.

Classroom and Field Trip Programs



"The children were actively engaged in the learning activities which held their interest."

Stonehedge Elementary

Sensing Nature

Pre K & Kindergarten
Field Trip or Classroom (All year)

Students will expand their awareness of the living environment using their senses. BWNC staff will lead students on a blindfold walk to identify trees, teach bird and frog calls, and discover the palette of colors right out the classroom window. Using their senses, students observe and learn to identify objects.

Attracting Woodland Fairies

Pre K & Kindergarten
Field Trip or Classroom (Spring or Fall)

The highly imaginative mind of the child is used as a stepping stone to the investigation of the living and non-living world of a woodland forest. Students can come to their own conclusions regarding the existence of woodland fairies, whose sole purpose it is said is to protect the plants and animals of Baltimore Woods.

A faireologist teaches the students folklore through the use of story telling, literature, and observation. Afterwards the students build their own fairy houses in the woods and make a fairy necklace.



"We are a preschool with children ages 3&4. The children are very in-tune to listening to fairies and quietly walking and using their eyes to find signs of fairies— we love it!"

What's Bugging You?

Primary
Field Trip (Spring or Fall)

In this fun and interactive program students learn about insect characteristics and life cycles by observing them in their natural habitat. Students participate in buggy arts and crafts, dress up like a bug, and of course, catch bugs! Equipped with butterfly nets and bug collecting containers, students get an up-close look at the bugs in the fields and forests.



Classroom and Field Trip Programs



The Snowflake Bentley Story

Primary

Field Trip or Classroom (Winter)

Bentley is credited with discovering the fact that no two snowflakes are alike. See Bentley's photographs and discover the different shapes and symmetry that make each snowflake unique! Students will be read to from the richly illustrated book, *Snowflake Bentley*, and play "Snowflake Shuffle" to test their observation skills. A discussion of liquids and solids will help students understand how snowflakes are made. Students make snowflake collecting apparatuses and a unique snowflake to take home.

Tree Life & Leaf Art

Primary

Field Trip or Classroom (Spring or Fall)

Students will explore through the woods to observe and identify the different trees around them. The various structures of a tree, their functions, life cycles, growth requirements and how trees adapt to the seasons will be discussed. Through literature and a fun take-home craft, students use the arts to identify and learn the unique features of several leaves and seeds.

**An additional fee is required for the Leaf Printing Craft, or T-shirts can be brought from home.*

Coping with the Cold *brrr*

Elementary

Classroom or Field Trip (Fall/Winter)

This presentation includes pictures, mounts, and animal furs to teach students about animal adaptations and migration habits during the cold winter months. Hands-on activities help students explore how humans insulate themselves from the cold. Field trips include a hike to look for animal homes such as woodchuck burrows and rabbit dens.

Scavenger Hunts

Primary/Elementary

Field Trip (Spring or Fall)

Students are given a list of words taken right from their vocabulary lists and sent out in teams to find objects in nature that best fit the description. Each team brings back items which are discussed with the class. This be adapted for K-1 non-readers.

Classroom and Field Trip Programs



Sugar Maple



*"It was a wonderful program!
Everyone enjoyed the way the
guides made learning so much
fun. The storytelling and hands-
on experience ties right in with
how our kids are learning!"
Syracuse City Schools*



Maple Syrup – Tree to Table

Primary/Elementary
Field Trip or Classroom (March)

BWNC teaches interesting facts about maple syrup history such as: the Iroquois legend of Chief Woksis and the discovery of maple syrup; how cane sugar replaced maple sugar as the preferred sweetener of early Americans; and the history of maple sugaring in New York. Students on field trips visit the sugar bush to learn about the maple sugar process and see maple sap turned into maple syrup.

Bird Beak Bonanza

Elementary
Classroom or Field Trip (All year)

In this fun hands-on program, students will use a variety of tools to explore bird beak adaptations. Find out how hummingbirds obtain nectar from a flower, and how ducks filter food from the bottom of a pond. Visitors to Baltimore Woods will also have a chance to observe wild birds such as blue jays, nuthatches, and woodpeckers while visiting a variety of feeders.

Pond Ecology

Elementary/Intermediate
Field Trip or Classroom (Spring or Fall)

Whether your class wants to come to Baltimore Woods to catch frogs at the pond or learn about them in the classroom— BWNC adapts the pond ecology program to your needs. Students will learn how pond animals such as salamanders and frogs adapt to life in the pond.



Classroom and Field Trip Programs



Beaver Wars!

Elementary/Intermediate
Field Trip (All year)

Did you know that wars have been fought right here in New York over our state mammal, the beaver? Students will learn about beaver adaptations and why they were so valuable to the European explorers. Groups explore the history of the beaver trade, and then go on an exploration of their own to visit a complex of beaver ponds here at Baltimore Woods. (Winter participants will travel on snowshoes.)

Animal Track Stories & Snowshoeing

Elementary/Intermediate
Classroom or Field Trip (Winter/Spring)

Discover how to read the stories animals leave behind in nature! By learning the three P's (Place, Pattern, and Print) students will learn a story's setting, characters, and plot. BWNC educators use mounts, posters, books, and animal traces to teach the basics of animal tracking and predator/prey relationships. The program culminates with groups of students working together to create their own track stories using track stencils on poster size paper. **This program is great when coupled with snowshoeing at Baltimore Woods.*



CSI: Baltimore Woods

Elementary/Intermediate
Classroom or Field Trip (All year)

Students help solve a classic case of predator/prey who-done-it. After a discussion of predator/prey relationships, students investigate a number of "crime scenes" set up with skulls, mounts, and other animal clues. With the help of our environmental educator and simple field guides, students identify who's been eating whom at Baltimore Woods.

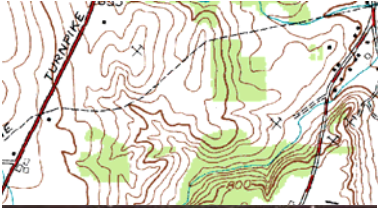
Photosynthesis Phun

Elementary
Field Trip (Spring)

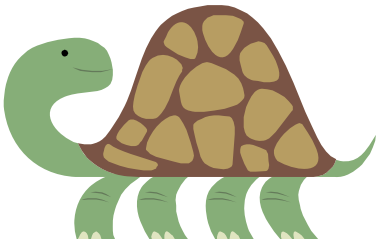
Learn about adaptations plants have that allow them to survive and thrive in Central New York. Using visual presentations and hands-on games and activities, students will learn how plants get their energy to live and reproduce. Students are divided into three groups to participate in teams for a plant scavenger hunt in BWNC's woodland gardens, a relay race that teaches about photosynthesis, & a game of concentration.



Classroom and Field Trip Programs



"Our science units are habitats and communities, water around us and this field trip is a good unit wrap-up."
Skaneateles Schools



Watersheds and Water Cycles

Elementary/Intermediate
Classroom or Field Trip (Fall/Spring)

What is your watershed address? Your class will explore the local geography, geology and topography of Central New York. Using topographical maps students discover their own watershed address and create maps with legends of where the water in their neighborhood flows. A class field trip to Baltimore Woods allows students to visit and learn more about Baltimore Brook and examine indicators of water quality.

Onondaga Creek: History, Exploration, and Future

Elementary/Intermediate
Classroom or Field Trip (All year)

Right in the heart of our city lays a hidden treasure: Onondaga Creek. Students learn the history of human interactions with the creek, from the time the Onondaga people first settled on its banks to today. Through the observation of live specimens and mounts students learn about the animals that inhabit the creek and play a game demonstrating the ways humans have hurt and helped these animals.

Create-a-Program

Primary/Elementary/Intermediate
Classroom or Field Trip (All year)

BWNC recognizes the diversity in your curriculum and interests, and wants to provide appropriate support to your classroom lessons. Work with BWNC educators to create your own program tailored specifically to your classroom needs. You provide the topic or educational goal — and we provide the rest! This programming option enables BWNC to offer field trips and classroom activities that are directly related to what your students are studying in school.

An additional programming charge applies to this option.

Naturalist Choice

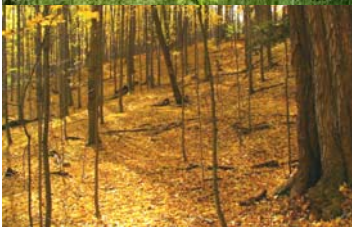
Primary/Elementary/Intermediate
Classroom or Field Trip (All year)

Not sure what program to select? Let BWNC educators choose for you! We will provide a program appropriate to the season and natural happenings of the area.

New York State Learning Standards



*"Very well done. Topics were what we requested and relevant to our curriculum."
Stonehedge Elementary*



Program	Page	NYS Standard Indicators
Sensing Nature	6	Science 4: 3.1, 3.2, 5.1, 5.2
Attracting Woodland Fairies	6	Science 4: 1.1, 3.1, 4.1, 5.1, 6.1 LA: 2
What's Bugging You?	6	Science 4: 1.1, 2.1, 2.2, 3.1, 4.1, 5.1, 5.2, 6.1, 7.1
The Snowflake Bentley Story	7	LA: 1 & 2
Tree Life & Leaf Art	7	Science 4: 1.1, 2.2, 3.1, 4.1, 6.1, 6.2, 7.1
Coping with the Cold! *brrr*	7	Science 4: 1.1, 1.2, 2.1, 2.2, 3.1, 3.2, 4.1, 4.2, 5.1, 5.2, 5.3, 6.1, 7.1
Scavenger Hunts	7	Science 4: 1.1, 3.1, 4.1, 5.2, 5.3, 6.1, 6.2 LA Standard 1
Pond Ecology	8	Science 4: 1.1, 1.2, 3.1, 3.2, 4.1, 5.1, 5.2, 6.1, 7.1 LA : 1
Beaver Wars	9	Science 4: 1.1, 5.1, 5.2, 6.1, 7.1 Social Studies: 1, 3, 4
Maple Syrup—Tree to Table	8	Science 4: 1.1, 1.2, 2.1, 2.2, 3.1, 3.2, 4.1, 4.2, 5.1, 5.2, 6.1, 6.2, 7.1 Social Studies: 1, 3, 4
Watersheds and Water Cycles	10	Science 4: 1.1, 1.2, 3.1, 3.2, 4.1, 5.1, 5.2, 6.1, 7.2 Social Studies: 3
CSI: Baltimore Woods	9	Science 4: 1.1, 2.1, 3.1, 3.2, 5.2, 6.1
Animal Track Stories & Snowshoeing	9	Science 4: 1.1, 2.1, 3.1, 3.2, 5.2, 6.1
Photosynthesis Phun	9	Science 4: 1.1, 1.2, 2.1, 3.1, 4.1, 4.2, 5.2, 6.1, 6.2
Bird Beak Bonanza	8	Science 4: 1.1, 2.1, 3.1, 3.2, 4.1, 5.1, 5.2, 5.3, 6.1, 7.1
Onondaga Creek: History, Exploration, and Future	10	Science 4: 1.1, 2.1, 3.1, 3.2, 5.1, 6.1, 7.1 Social Studies: 1, 3, 4

Program Registration Form

Name of School _____
Address _____ Zip _____
Name of Teacher _____ Teacher Phone _____
Email _____ School Phone _____

Name of Program _____ Grade _____
Total Number of Students _____
Number of Classes _____

Date and Time requested (please list three choices)

1. _____ Time _____
2. _____ Time _____
3. _____ Time _____

Will you be using our facilities for lunch? yes ____ no ____

Location of Program (please circle one option)

Baltimore Woods
School Room # _____
Other _____

Confirmations will be emailed within one week of receiving your application. Please forward your confirmation letter to all participating teachers and inform us of any changes.

Arriving on Time is very important. Please arrive 15 minutes early, to allow students time to use the rest rooms and get settled. If you arrive late, your program may be shortened.

Cancellation of a program is honored up to two weeks before the scheduled program date. Programs cancelled less than two weeks before the program date will be charged a \$35 processing fee; *Nature in the City* participants are exempt from processing fee, but BWNC cannot guarantee rescheduling and the scheduled hours will be considered program hours for your school. In the case of questionable weather, BWNC will determine if the program should be cancelled. BWNC honors school snow cancellation policies.

Submit this form via email, fax, or hardcopy mail to:



**Baltimore Woods
Nature Center**
Nature in your hands

School Programs

Baltimore Woods Nature Center

4007 Bishop Hill Road

P.O. Box 133

Marcellus, NY 13108

Phone 315.673.1350

Fax 315.673.3671

Email Katie@baltimorewoods.org



**Baltimore Woods
Nature Center**

Nature in your hands