



**Baltimore Woods
Nature Center**
Nature in your hands

the Overlook

FALL • 2011 • VOLUME 25 • NUMBER 3

Take a moment...

The natural and cultural history of Central New York reveals the need for responsible land use. Just as landscapes change over time, so do cultures and their relationships to the land. The seasons are shifting, and Baltimore Woods encourages you to take a moment to evaluate your own evolving connection to the land. How has your relationship changed throughout the years?

Just Plain Good Lessons from Grandma

By Patty Weisse

When I was very young I recall making applesauce with my grandmother in her kitchen in Indiana. She explained to me how we could get sick if we didn't take the time to do things carefully. I was an impatient, hungry five year old who just wanted to eat the applesauce, so I asked, "Why do we eat food that can go bad and hurt us?" She told me, "Patty, real food has the ability to go bad. If food can't go bad you should think twice about eating it, because if it can't go bad then it doesn't have the things in it that can really help you to live."

we substitute prepared meals from the supermarket — unaware of the added salts, sugars, preservatives, and fats we get in the bargain, and even more tragic, missing out on the delicious bounty our Finger Lakes Region provides, and that vitality my Grandma was referring to.

Fortunately, there is a growing awareness and call for fresh, farm-to-table fare in Central New York. On September 18th, we're taking this forward and bringing Central New York's pioneering farm-to-table chefs to Baltimore Woods for a cookoff competition: the inaugural *envIRONMENTAL CHEF, homegrown* event. Chefs Steve Landon, Alicyn Hart, Joelle Mollinger and Ellen Leahy will go "head to head", competing to prepare delectable appetizers made with locally grown food, paired with Konstantin Frank wines and Middle Ages beer.

What's more, we'll be honoring Jean Graham at this event. Jean was one of our most dedicated volunteers and worked tirelessly with me and the rest of the staff at The Woods to bring garden-to-table foods to our monthly volunteer lunches.

Eating locally gives us nutritious, flavorful food while reducing our carbon footprint. It is simply a more delicious and nutritious way to feed our families. Best of all, buying local foods and using locavore products helps strengthen our local economy by supporting our farmers, the community, and protecting our community's natural resources — a priority goal for Baltimore Woods. I hope you will join us on September 18th to witness the exciting cook-off competition.

Grandma was not a scientist but she spent countless hours growing food in her garden and putting that food away for the winter by canning or freezing it. Her Depression-era mentality and know-how helped her to live well through very difficult times on a tight budget. Again and again I reflect on Grandma's words and wisdom.

Times have changed and our modern relationship with the landscape that surrounds and sustains us has become less

direct. Grandma used to grab her basket and go food shopping in her garden. Excess vegetables were shared with friends and neighbors, or traded for something that someone else had in abundance. The knowledge of how to prepare fresh garden foods for the table is not something that everyone today has learned from their wise grandmother. Without this knowledge,



**Celebrity Chefs Compete in
Culinary Cook-Off Competition
Sunday, September 18,
4-6:30pm**

Four of the area's best chefs cook-off in a culinary competition using local foods.

Sous chefs are chosen from patron ticket holders, and the audience are the judges! Locally grown and produced foods connect

people to the abundance available in CNY. Tickets on sale now: \$75/pp general admission; \$100/pp patron admission includes chance to be a sous-chef at the event and a mystery swag bag. This event is held in memory of Jean Graham, and is a fundraiser for Baltimore Woods Nature Center. Call (315) 673-1350 or visit www.baltimorewoods.org for full information and ticket purchase.



4007 Bishop Hill Road
PO Box 133
Marcellus, NY 13108-0133
315.673.1350
www.baltimorewoods.org



**Baltimore Woods
Nature Center**
Nature in your hands

The Overlook

The Overlook is a membership benefit of Baltimore Woods Nature Center. Reproduction without permission is prohibited. Baltimore Woods is a not-for-profit organization that offers people of all ages opportunities to enjoy and learn about nature first-hand in a positive environment that encourages lifelong respect for nature, for others, and for self. The Interpretive Center is open Monday through Friday 9am to 4pm, and Saturday 10am to 4pm. Closed Sunday. The Center is closed on Monday, September 5 for Labor Day. Hiking trails are open every day dawn to dusk. Hiking and parking are free.

Direct contributions and inquiries to:
Baltimore Woods Nature Center
Box 133 • Marcellus, NY 13108

Website: www.baltimorewoods.org • Telephone (315) 673-1350

Staff

Emma Anderson
Environmental Educator

Deirdre Aureden
Fund Developer

Jeff Devine
Land Manager

Sue Jones
Office Manager

Becky Lynch
Environmental Educator

Tom Meier
Camp Director

Katie Mulverhill
Environmental Educator

Thea Reidy
Marketing/Executive Assistant

Misty Schwab
Graphic Designer

Patty Weisse
Executive Director

Board of Directors 2011

Phil Mazza, *President*

Nikki Shrimpton, *Vice President*

David Brown, *Treasurer*

Guy Swenson, *Secretary*

Linda Achimore

Lynn Cleary

Tim Dudley

Marvin Druger

Dave Eichorn

Gary Germain

Terry Horst

Janet Heinrich

Glen Lewis

David Liddell

Lisa D. Miller

Jacqueline Orzell

Camille Tisdell

Wort's the Problem?

By Becky Lynch

The following interview features George Spak who has volunteered at Baltimore Woods Nature Center for 5 years. George also worked for the Nature Conservancy for 18 years as an invasive species specialist.

BL: What is pale swallow-wort and what makes it an exotic invasive?

GS: Pale swallow-wort is an herbaceous vine that starts off as ground cover and will then twine its way up plants that are nearby. The plants form a big, thick mass of roots that make it difficult to dig up. The plants are invasive because there are no natural controls like animals eating them, and they can take over the area where they are growing.

BL: What are you using to treat pale swallow-wort? Does it affect other plants and animals? What would happen if people came into contact with it?

GS: I use triclopyr or glyphosate based herbicides, which are applied as a foliage spray just like you'd use if you were spraying any lawn weed. The spray is only applied to the pale swallow-wort so will do no harm to other plants. Animals are not likely to eat the plants because of its toxic nature. Once the spray has dried it is safe for human contact and all safety precautions are taken before and after application. Only one application is needed to kill the plant.



Shifts in the Forces of Nature

In August **Linda Bonnell** left The Woods after nearly three years of service. During her tenure, Linda earned the reputation as a new "force of nature". She oversaw the transition of the Hand House office space for our expanding education staff, created the gift shop, converted our membership and volunteer data into a single database and professionalized the books. Linda will not be far and she leaves as a dear friend. We will miss her determination and tenacity.

The Woods welcomes **Sue Jones** as our new Office Manager. Sue is a Skaneateles Village Trustee. She has extensive non-profit management experience at Neighborhood House Day Care Center and has worked for the Wells College Alumnae Relations office.

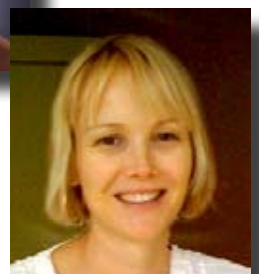
A second welcome to **Deirdre Aureden**, our new part-time Fund Developer.

Deirdre moved to CNY two years ago from Arkansas where she worked for a Community Arts Center. She is on the board of the Schweinfurth Museum in

Auburn and has experience in green business planning.



Sue Jones



Deirdre Aureden



continued on page 5 sidebar...

September

Calendar of Events

5 Labor Day Holiday
The Interpretive Center is closed.

10 Art Gallery Reception
2-4pm
Everyone is invited to visit the art gallery, meet wildlife artist Bob Ripley and view the exhibit *Natural Selections*. Enjoy an afternoon of art and good company. Admission and parking are free; this event is open to the public.

12 Nature's Little Explorers: Bugs and Slugs
10-11:30am
Join us for a log rollin' good time! We'll explore The Woods on a scavenger hunt for...you guessed it! Bugs and slugs! Children must be accompanied by an adult. Registration deadline is September 10th. \$8/child (member); \$12/child (nonmember); adults free.

12 Home School Expeditions: Fabulous Frogs
1-2:30pm
Hop on over to Phillips Pond and explore the fabulous world of frogs! Be sure to wear clothes that can get muddy! Meet at the lower parking lot. Registration deadline is September 10th. \$8/child (member); \$12/child (nonmember); adults free.

16 Star Party: Elusive Planets
8-10pm
The summer skies are sinking and the fall skies are taking over. Many far-off galaxies can be viewed as distant patches of light in a telescope, plus the elusive planets Uranus and Neptune. \$5 for members, \$15/family; \$8 for nonmembers, \$25/family.
Back-up date: September 17th.

18 Garden Tour at Sycamore Hill
10am-4pm
Enjoy a self-guided tour of the magnificent Sycamore Hill Gardens, 2130 Old Seneca Turnpike, Marcellus. 500 varieties of trees, 200+ varieties of shrubs and thousands of perennials await you, rain or shine. Proceeds benefit Baltimore Woods and the Garden Conservancy. \$5pp, Free admission for children 12 and under. FMI visit: www.opendaysprogram.org



18 envIRONMENTAL CHEF homegrown at Baltimore Woods Nature Center
4-6:30pm
See details of this event on front page.

21 Volunteer Lunch
Noon
Baltimore Woods greatly appreciates all the volunteers who give their time and efforts to help further our mission. Every third Wednesday of the month The Woods offers our volunteers a lunch of locally harvested foods. All Baltimore Woods volunteers are welcome! Please call ahead to register.

21 Cool Bugs!: An Evening with Steven Daniels
7-8:30pm
Join Steven Daniels, an expert on butterflies, as he takes a closer look into the extraordinary lives and lifestyles of our 6-legged friends. This fascinating lecture is designed for older children and adults. \$5 for members; \$15/family; \$8 for nonmembers, \$25/family.

24 Barefoot Hike
1-2:30pm
Free your feet! Come feel the earth under your soles again at Baltimore Woods, as Barefoot Bob (official member of the Barefoot Society of CNY) reconnects you to this underutilized mode of transportation. Join Bob for a half-mile barefoot hike along the Valley Trail over grass, wooden bridges, leaves and soil. Accommodates 5-20. ***This program is not intended for families with strollers.*** \$5 for members; \$15/family; \$8 for nonmembers, \$25/family.

In the Weeks Art Gallery

Bob Ripley
Natural Selections
paintings of wildlife in watercolor

September 6th through October 28th, 2011

Reception for the Artist:
Saturday, September 10th, 2-4pm

The natural world informs Ripley's work as a wildlife artist. Painting in the realist tradition of the masters Winslow Homer and Andrew Wyeth, Ripley's work demonstrates a level of understanding known only by those in direct contact with the wild ones.

Please visit our website:
www.baltimorewoods.org, and www.bobripley.com/ for more information on this talented, "natural" artist.

Gallery exhibits are open to the public. There is no charge for parking or admission.



Fox by Bob Ripley

Upcoming Gallery Exhibit

Third Annual Members Group Art Exhibit
Drawing on Talent

November 8th through December 30th, 2011

Reception:
Saturday, November 12th, 2-4pm
Call for artists:

Join our community of member artists and exhibit your work in the Weeks Gallery at Baltimore Woods. All current members are eligible to exhibit, and works in all media are accepted. This is the third year we are presenting this event; veteran artists as well as emerging artists are welcome. Please contact thea@baltimorewoods.org, or stop by The Woods to pick up submission guidelines, available mid-September.

Wort's the Problem?

BL: Is there a specific time of year when the herbicide needs to be applied?

GS: It can be applied anytime the plant is actively growing. Sometimes it's better to wait late in the season because the plant is more readily able to translocate the herbicide to the root and kill the root. It could be dug, and I do dig them, but there's always a chance that it won't kill the plant and digging is labor intensive. If you were to pull the plant it would only break off at the stem, and at the break there are one or two buds waiting to grow.

BL: What is the story with the monarchs?

GS: Pale swallow-wort is a member of the milkweed family, and the monarchs, who usually lay their eggs on milkweed, cannot tell the difference between these plants. Once the eggs are hatched the larvae eat the plant and die because the chemical composition is different than actual milkweed. If you break open the stem and smell it you'll get a good idea what it would probably taste like!

BL: How long do you think it would take pale swallow-wort to take over a forest if left unchecked?

GS: I'd say it would take decades; it's a perennial plant and takes about 3 to 4 years to reach maturity. Garlic mustard is much harder to control: it's a biennial producing hundreds of seeds per plant. An advantage of pale swallow-wort's growth is that by catching it in an early stage and treating it by any means you use, you have a good chance of getting rid of it.

BL: Thanks for all the great information, George! Below are a two websites to check out for additional information on pale swallow-wort.

Cooperate Extension Nature Conservancy: www.ars.usda.gov/naa/ithaca/bioIPM

Cornell Cooperative Extension in Jefferson County: Cce.cornell.edu/~Jefferson



October

Calendar of Events

1 Star Party: National Astronomy Day 7:30-9:30pm

The first weekend in October is home to National Astronomy Day, so why not come and have a look at the skies! Come and view the planets Uranus and Neptune through telescopes, plus the early winter star clusters such as the Pleiades, along with the king of the planets, Jupiter, rising in the east. \$5 for members, \$15/family; \$8 for nonmembers, \$25/family.

Back-up date: October 2nd.

15 If These Trees Could Talk 1-2:30pm

Join Baltimore Woods Naturalist Tom Meier on a journey through time. The shape of the forests at Baltimore Woods is intimately tied to the lifestyles of all the people who came before. This hike will take an inspiring look at the history of the preserve and the ever changing relationships between people and the land, as told through the eyes of the colorful autumn trees. \$5 for members, \$15/family; \$8 for nonmembers, \$25/family.

19 Volunteer Lunch Noon

On the third Wednesday of the month Baltimore Woods offers volunteers a lunch of locally harvested foods at the Interpretive Center. All our volunteers are welcome! Please call ahead to register.

22 Double Dog Dare Walk 8-9:30pm

Baltimore Woods dares you — no, double dog dares you, to walk through the woods with only the moon lighting your way! Search for creatures that go bump in the night and for treats hidden along the trails. Accommodates 10-25 participants. \$5 for members; \$15/family; \$8 for nonmembers, \$25/family.



Baltimore Woods
(315) 673-1350
www.baltimorewoods.org

November

Calendar of Events

5 Montezuma Migrants Field Trip

8-11am

Peak waterfowl migration at Montezuma National Wildlife Refuge brings over 200,000 ducks and geese to Central New York. Baltimore Woods staff will be on hand to point out rare migrants before they move on to warmer waters. Meet at Baltimore Woods at 8:00am to carpool, otherwise meet at Montezuma at 8:30. Please register. Donations are appreciated.

5 Environmental Experiences for Early Childhood Workshop

9am-12noon

See sidebar for details.

11 Nature Adventure Day Camp

9am-4pm

Pioneer Adventures!
See below for details.

12 Artist Reception: Members' Group Art Exhibit

2-4pm

November 8th to December 30th, the third annual art show featuring works in all media by members of the Baltimore Woods community is on exhibit in the Weeks Art Gallery. Admission to the reception is free, and the public is welcome.

16 Volunteer Lunch

Noon

On the third Wednesday of the month we offer our volunteers a lunch of locally harvested foods at the Interpretive Center. All our volunteers are welcome!

17 Star Party: Leonid Meteor Shower

7:30-9pm

The Leonid meteor shower is one of the year's finest, so come and have a look! Also visible will be the planets Jupiter, Uranus, and Neptune, plus many bright star clusters and nebulae of the early winter skies. Bring a lawn chair or blanket to lie back and watch for meteors when you're not looking through a telescope, and be sure to dress warm if the night is cold. \$5 for members, \$15/family; \$8 for nonmembers, \$25/family.

Back-up date: November 18th.

19 First Annual Harvest Home with Bells & Motley

2:30-4:30pm

For the first time in years the log cabin will come alive with music and celebration! John and Sondra Bromka will lead us on an enjoyable journey of nature-based folklore and legend, music, dance and craft of traditional harvest celebrations. Join them around the campfire as we start a new Baltimore Woods tradition by tapping into the deep connections our ancestors had with the land. Registration required; must register by November 12. \$10/members, \$30/family; \$15/nonmembers, \$45/family.

24 Thanksgiving Day

Interpretive Center Closed
Thanksgiving Day hike the trails of Baltimore Woods and walk off that delicious holiday meal! The Interpretive Center is closed, but the trails and parking are open dawn to dusk. The Interpretive Center reopens Friday, November 25 at 9am.

Environmental Experiences for Early Childhood Workshop

Saturday, November 5th
9am-12pm

(building open for workshop only at 9)

Exploring nature with young children is a perfect fit because it is a complete sensory experience. Early experiences with the natural world excite children's imaginations and foster their inborn sense of wonder and curiosity, which are important motivators for lifelong learning.

Project Learning Tree's *Environmental Experiences for Early Childhood* guide integrates nature-based exploration, art, literature, math, music and movement, and outdoor play into early childhood education programs. It allows children to explore, discover, and communicate in expressive ways. For more information on Project Learning Tree, visit: www.plt.org.

Join Baltimore Woods Educator Katie Mulverhill for a hands-on workshop and become a Project Learning

Tree certified educator. The workshop will explore the *Environmental Experiences for Early Childhood* guide and will demonstrate some of the exciting hands-on activities it contains. The workshop accommodates up to 20 participants. Registration required by November 2nd. Cost for members \$10, nonmembers \$13. Light refreshments will be provided.

Attend this workshop and get Project Learning Tree's *Environmental Experiences for Early Childhood* guide FREE!



Nature Adventure Day Camp

Veteran's Day November 11th, 2011 9am-4pm

Pioneer Adventures!

Get back to basics this Veteran's Day at Baltimore Woods! Come to camp for a fun filled day when we'll use games and activities to rediscover pioneer living. The adventure happens on November 11th. Camp runs from 9am to 4pm, with early and late care available. Registration forms are available on our website, pre-registration is required. Cost is \$35 per camper, family membership required.

Space is limited — don't miss out!



Join Us Today!

Share your love of nature
GIFT MEMBERSHIPS
 available at
 Baltimore Woods Nature Center
 Call (315)673-1350
 to sign your friends up!

Baltimore Woods Nature Center offers the best ...

- nature observation and enjoyment
- flower, herb and wildflower gardens
- adventure nature day camps
- 6+ miles of hiking trails
- public programs year-round for seniors, adults, families and children
- art gallery with Members-Only exhibit
- bird-watching station
- Discovery Library for nature study
- educational exhibits
- volunteer opportunities in many areas

Annual Membership Level

- \$15 Senior/Student
- \$25 Individual
- \$40 Family
- \$75 Sustaining
- \$100 Patron
- \$250 Benefactor
- \$500 Philanthropist
- \$1000 Life
- Donation Amount
(in addition to membership)

Name _____

Address _____

Make checks payable to:
Baltimore Woods Nature Center
 Visa and Mastercard accepted.

Return this coupon with payment to:
Baltimore Woods Nature Center
 P.O. Box 133
 Marcellus, NY 13108



Last Year's Report Cards Are Good — Now, Back to School!

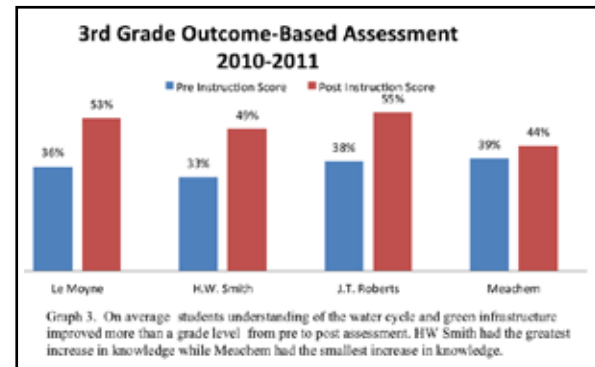
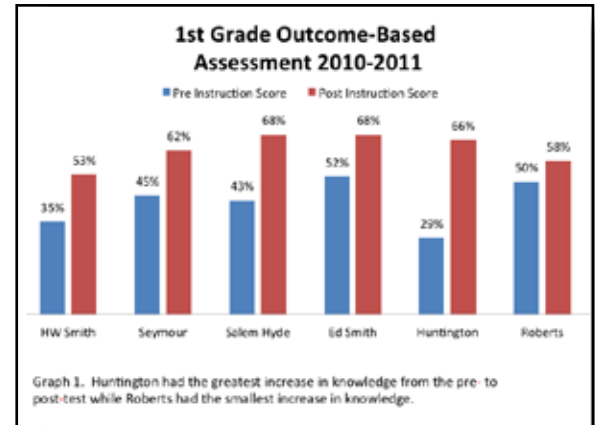
By Emma Anderson

It is the time of year when pencils are bought and sharpened. Notebooks are full of pages wanting knowledge. Summer sunburns and scraped knees are healing after days and weeks spent exploring and playing outside. School buses are seen around town, and boxes of chalk wait in the classrooms—it is the beginning of the school year. It's time for hands-on/minds-on science learning to start again in the Syracuse elementary schools with another year of *Nature in the City*.

This year we are happy to be in ten of Syracuse Elementary schools: Roberts, Blodgett, Seymour, Elmwood, Meachem, HW Smith, Ed Smith, Salem Hyde, Dr Weeks and LeMoyne.

As we look towards the upcoming academic year it is important to take a moment to appreciate all the learning that happened over the past academic year 2010-2011 and to thank all of the corporate sponsors who help bring *Nature in the City* to the city of Syracuse. It is only with the support from our sponsors that *Nature in the City* is able to be the amazing program that it is, so thank you: Lockheed Martin, National Grid, Time Warner, Dominion, SRC, Syracuse University's Near West Side Initiative, Constellation Energy, Colonial Laundromat, Key Bank, Byrne Diary, AXA, John and Candace Marsellus, Gear Motion Foundation, Anaren Microwave, the CNY Air and Waste Management Association, Syracuse City School District and the Onondaga County's Save the Rain Green Infrastructure Education Program.

Over the last academic year students from Kindergarten to 6th grade all increased in scientific knowledge in areas from states of matter, to the geologic history of Central New York.



Emma leads an excited group of elementary school students outside to explore and learn about the natural world around them.

KID'S PAGE

Make a Bullroarer

Through the years many different people have called Baltimore Woods home. During our November Pioneer Camp we like to celebrate the way the pioneers lived; especially the children. A Bullroarer is a simple toy that many pioneer children would have played with. Here are the directions to make your own!

Materials:

36 inches of heavy string

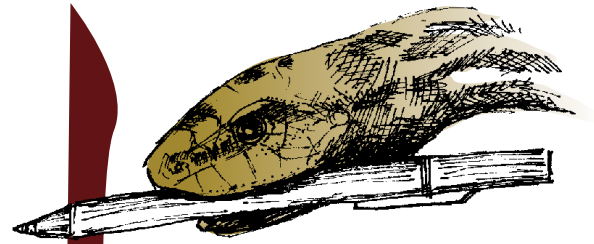
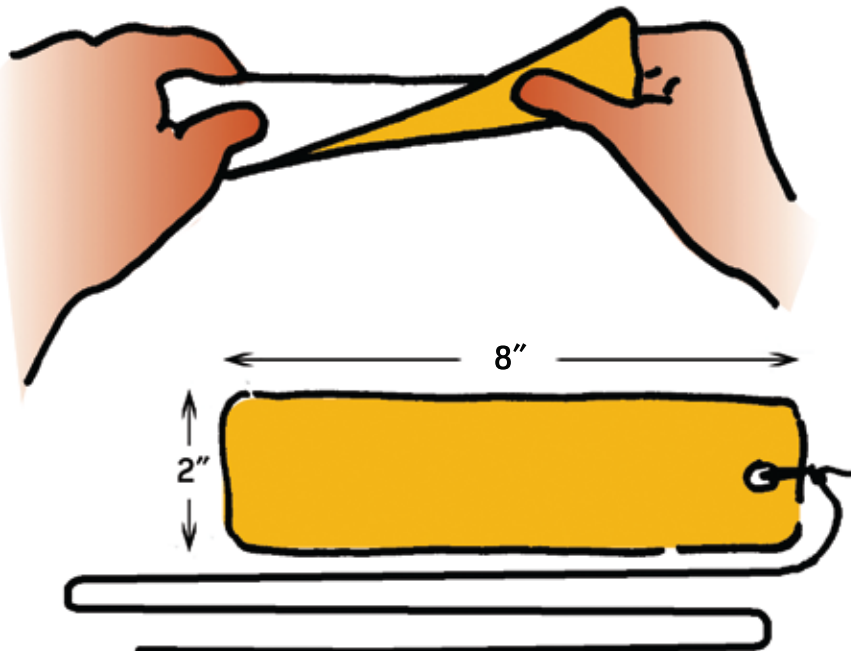
Cardboard

Scissors

Directions:

Cut the cardboard into an 8 inch by 2 inch rectangle. Use the scissors to round the corners. Gently bend the cardboard to make a diagonal curve lengthwise across the rectangle. Punch a hole in one end (about 1/2 inch from the end.) Thread the string through the hole and securely tie it to the end.

Now you are ready to try it out. Hold onto the end of the string and start to swing the bullroarer around in circles (outside is the best place to use this toy!) As it swings through the air it will start to make a sound. If you change the length of the string or how fast you swing it around the sound will change. You can see, or should I say hear, why it got the name Bullroarer!



Dear Miss Hiss

Dear Miss Hiss,
Why are you always sticking your tongue out at me?

— Emily 11 years old

Dear Emily,

What a delightful question! I do that a lot don't I? I'm not trying to be impolite; I am actually just smelling you in the air. As I recall you smelled quite nice which is pleasant for me since I have to smell stinky camp kids most of the time. Can you smell with your tongue? Give it a try! If it didn't work, that is because you lack a very sensitive spot in your mouth called the Jacobson's organ. This organ checks out the smells and lets me know if you're a meal, a mate/friend or enemy.

Did you ever wonder why my magnificent tongue is forked? Do you have a television? If you've ever watched a movie with surround sound you're hearing the movie all around you instead of just in front of you. My forked tongue allows me to smell in the same way! Each point on the tip of my tongue fits into one of the openings to the Jacobson's organ. If the smell is stronger on one side that lets me know from which direction the smell is coming. This is a clever trick snakes use to track prey.

I also use my tongue to taste and even touch—it's a very multipurpose organ, and I don't know what I would do without it! So next time you see me sticking my tongue out at you, you'll know I'm just giving you a sniff—I like to think of it as a snake handshake!

Love,
Miss Hiss

Wish List



an off-road 4WD utility vehicle
(such as a Gator)

portable water coolers
in good condition

circular saw

rolling cart table

art print rack for the gallery

Welch Allyn's Beacon Team Cuts Trail

Volunteers from Welch Allyn came to The Woods on July 15th to remake the Valley Trail. Last year over 24,000 people hiked the six miles of trails at The Woods.

Thank you, Volunteers!



**Baltimore Woods
Nature Center**
Nature in your hands

Non-profit Organization
U.S. Postage Paid
Marcellus,
New York
Permit Number 9

ADDRESS SERVICE REQUESTED

September

Sunday	Monday	Tuesday	Wednesday	Thursday	Friday	Saturday
					2	3
4	5	6	7	8	9	10
Ground cherries were used for pies by American colonists.	Labor Day: Center is closed					Art Gallery Reception 2-4pm
11	12	13	14	15	16	17
Garden Tour 10am-4pm envIRONMENTal CHEF homegrown 4-6:30pm	 Nature's Little Explorers 10-11:30am Home School Expeditions 1-2:30pm Corn Moon	Native Americans dried staghorn sumac berries for winter food.			Star Party: Elusive Planets 8-10pm	
18	19	20	21	22	23	24
			Volunteer Lunch Noon Cool Bugs! 7-8:30pm			Barefoot Hike 1-2:30pm
	Crows collect and stash acorns, carrying several at a time in a pouch behind their lower bill.					
25	26	27	28	29	30	




October

						1
						2
						3
						4
						5
						6
						7
						8
						9
						10
						11
						12
						13
						14
						15
						16
						17
						18
						19
						20
						21
						22
						23
						24
						25
						26
						27
						28
						29
						30
						31



Reds and purples in leaves is caused by Anthocyanin, a pigment made from decomposed chlorophyll and the waste products of a leaf.


Harvest Moon
 Carotene, a pigment in some tree leaves, is responsible for the yellows and oranges seen on hillsides.

Volunteer Lunch
 Noon

Double Dog Dare Walk
 8-9:30pm

If These Trees Could Talk
 1-2:30pm

Mice collect milkweed seeds. Sometimes they leave the fluff behind and sometimes they use it in their nests.

Everyone loves apples, including red and gray fox, eastern coyote, black bear, raccoon, opossum, white tailed deer, beaver and wild turkey.

November

Sunday	Monday	Tuesday	Wednesday	Thursday	Friday	Saturday
		1	2	3	4	5 Montezuma Field Trip 8-11am Early Childhood Workshop 9am-12noon
6 Beavers are now actively preparing for winter.	7	8	9	10 Beaver Moon	11 Nature Adventure Day Camp 9am-4pm	12 Art Gallery Reception 2-4pm
13 Whitetail bucks' antlers are full grown, and they begin to spar with other males.	14	15	16 Volunteer Lunch Noon	17 Star Party: Leonid Meteor Shower 7:30-9pm	18	19 Harvest Home with Bells & Motley 2:30-4:30pm
20 November's shorter and cooler days decrease transpiration and the water needs of trees—this is an excellent time for transplanting.	21	22	23	24 Thanksgiving: Interpretive Center Closed	25	26
27 If you are planning to plant a live Christmas tree, prepare the hole now before the ground freezes.	28	29	30			

Save the Dates

Three events for Baltimore Woods members are coming up—please plan on joining us, and mark your calendars to save these dates.

The Volunteer Community Dinner **December 6th, 2011**

To express in this small way our gratitude to the many volunteers who help The Woods all year long in so many ways, we invite our volunteers to come together to break bread. And cakes, casseroles, salad, cookies, meats, cheeses.. you get the idea. We will ask you to RSVP to reserve your place as seating is unfortunately limited, and we'll be sending more information on that later this fall. Please watch for it and plan on joining us and everyone else who keeps The Woods running so well.

The Annual Meeting **January 24, 2012**

Baltimore Woods is a member-supported organization. Join us at the annual meeting, be part of the voting quorum and enjoy hearing about what The Woods is doing.

Local Harvest Dinner **January 22, 2012**

Mark your calendars for the third annual Local Harvest Dinner! As the dark days of winter descend upon us come enjoy delicious local food, good company, and cheer. Celebrate the local bounty we have right here in Central New York. Graze from station to station sampling foods and conversing with the local farmers and food producers who help make the wonderful bounty that we have here in Central New York. This program is open to the public.



Save the Dates

Volunteer Community Dinner
Tuesday, December 6th, 2011
6-9pm

Annual Meeting
Tuesday, January 24th, 2012
7-9pm

Local Harvest Dinner
Sunday, January 22nd, 2012