



**Baltimore Woods
Nature Center**
Nature in your hands

the Overlook

Winter



2011

Volume 25



Number 1

For a Richer Experience, Narrow Your Focus

Winter is a time of simple pleasures—simmering soups and stews, reading by the fire, moonlit snowshoe hikes. The season offers quiet times for reflection and appreciation of the year's bounty. It's a chance to slow down, reflect, and focus on what we value most in our lives.

Annual Meeting and Potluck Dinner

Tuesday, January 25th, 2011

**Potluck dinner: 6pm
Annual Meeting: 7pm**

Bring a dish to pass for dinner and stay for the meeting. Look back on 2010 and hear about some of the upcoming initiatives for membership supported Baltimore Woods Nature Center in 2011. This meeting is open to all members.



4007 Bishop Hill Road
PO Box 133
Marcellus, NY 13108-0133
315.673.1350
www.baltimorewoods.org

Beaver Tales and Closed Trails

by Patty Weisse

The beavers' engineering attempt at Baltimore Woods in 2001 was lame. The work appeared to be spearheaded by a hare-brained juvenile who didn't know how to construct a dam properly. Their early work was not enduring, and they didn't stay long.

Three years later, the beavers returned with a splendid set of dams towards the headwaters of Baltimore Brook on the southern most boundary of the property. The beaver area was off the trail grid, tucked away from marked hiking trails. Only camp groups, or planned programs visited the spot. Their elaborate series of dams and lodges covered a four acre area. There were numerous bank burrows and stumps that bore their distinctive tooth marks. It was a bonanza for our education program to be able to show such glaring evidence of wildlife on the property. We had a lot of fun watching and wondering when they would exhaust the food supply and move on to another area.

This summer, the beavers moved downstream and built a dam in the Griffiths Flat, presenting us with a dilemma as well as opportunities. Baltimore Brook in the Griffiths Flat area had once been dammed by humans to create a pond for harvesting ice. When refrigeration became a regular feature in CNY households, the earthen dam was breached, and the riparian wetland habitat of Baltimore Brook resumed its hold on the area. This summer, the beavers migrated downstream and closed off the small breach to convert the area back to its earlier ponded condition. Plots of myrtle adorn the outline of the edge of the former ice pond area in the Griffiths Flats. The beaver-ponded water now comes to within a foot or so of the remnant myrtle patches, indicating the beavers have reclaimed the old ice pond in its entirety.

Baltimore Woods has decided to close most of the Griffiths Trail. Losing this small part of the trails for a brief period of time (perhaps a year or two) will ultimately improve habitat for native species. What's more, allowing the beavers to continue their activity in this area that is highly visible from the Boundary Trail and accessible to curious hikers provides an excellent interpretive opportunity. The decision to let the beavers have their way is multifaceted: safety is, of course, a primary consideration. However, the beaver-induced flooding will eventually kill off the invasive shrub species like buckthorn and honeysuckle, saving hundreds of hours of labor needed to remove it and improving the habitat over the long term for native species.

CNY winters compel us to slow down, narrow our focus and let the quiet and darkness bring about rest and recharge. In a similar vein, the beaver-induced changes that brought about the trail closure will ultimately enrich the habitat for years to come. Certainly, the modest inconvenience is well compensated for by rich beaver observation opportunities. Come join us for a snowshoe hike on a frosty winter day to see the beaver engineering in the Griffiths Flat up close.





**Baltimore Woods
Nature Center**
Nature in your hands

The Overlook

The Overlook is a membership benefit of Baltimore Woods Nature Center. Reproduction without permission is prohibited. Baltimore Woods is a not-for-profit organization that offers people of all ages opportunities to enjoy and learn about nature first-hand in a positive environment that encourages lifelong respect for nature, for others, and for self. The Interpretive Center is open Monday through Friday 9am to 4pm, and Saturday 10am to 4pm. Closed Sunday. The Center will be closed November 25th, December 24th, 25th, 31st and January 1st, 2011. Hiking trails are open every day dawn to dusk. Hiking and parking are free.

Direct contributions and inquiries to:
Baltimore Woods Nature Center
Box 133 · Marcellus, NY 13108

Website: www.baltimorewoods.org · Telephone (315) 673-1350

Staff

Emma Anderson
Environmental Educator

Linda Bonnell
Business Manager

Jeff Devine
Land Manager

Jane Hastedt
*Database and Volunteer
Coordinator*

Becky Lynch
Environmental Educator

Tom Meier
Camp Director

Katie Mulverhill
Environmental Educator

Thea Reidy
Marketing/Executive Assistant

Misty Schwab
Graphic Designer

John Weeks
Consultant

Patty Weisse
Executive Director

Board of Directors

Scott Stearns, President
Phil Mazza, Vice President
David Brown, Treasurer
Guy Swenson, Secretary
Ginny Calvert
Lynn Cleary
Marvin Druger
Tim Dudley
Dave Eichorn
Gary Germain
Jan Heinrich
Terry Horst
Steve Keeler
Glen Lewis
Keith MacBain
Lisa D. Miller
Jacqueline Orzell
Nikki Shrimpton
Carol Wixson

You Say Goodbye, I Say Hello

Hello, Becky

I am thrilled to be joining the Baltimore Woods staff as a part-time Environmental Educator.

I received a BS of Science from the SUNY College of Environmental Science and Forestry in 2008; I majored in Natural History and Interpretation. I look forward to learning from my fellow co-workers and having great experiences at Baltimore Woods!

I currently reside outside the town of Marcellus with my husband Mike, puppy Jax and two cats, Belladonna and Primadonna.



Goodbye Matt

Matt Kauffman left The Woods to move on to new journeys and opportunities in Buffalo, NY. Before Matt left, he gave us this list we now share with you. *Journey on Matt!*

Matt's Top 5 List:

Everyday Experiences at Baltimore Woods

5. Another shoe pops up from the depths of The Swamp.
4. Someone discovers solitude and serenity while sitting on a bench by Boulder Brook.
3. The birds; from chickadees bustling in the white pines in winter, to the summertime song of the indigo bunting, ringing out near the pavilion.
2. Catching your breath after completing a hike back to the top of the Valley Trail.
1. Smiles of delight and wonder, whether on the faces of school children catching their first crayfish, or volunteers looking back on the results of their hard work.



December

Calendar of Events

4 Saturday Fly-Tie

11am-Noon

As fishing season wraps up, Baltimore Woods invites you to bring your tools and materials for fly-tying. We'll learn and share fly tying techniques while enjoying coffee and camaraderie. Please register to attend. Donations are appreciated.

4 Project FeederWatch Kick-Off

2pm-3pm

Join us for the official start of our Project FeederWatch program. A Naturalist will lead a talk about birds in winter and discuss how you can attract birds to your own yard. Learn to identify some of these hardy wintertime visitors and collect important information to help scientists study these amazing creatures. Members \$5, \$15/family; nonmembers \$8, \$25/family.

7 Volunteer Community Dinner

6pm

See sidebar, this page

10 Project FeederWatch

10am-3pm

Baltimore Woods is partnering with Cornell Lab of Ornithology to collect important data about birds. Become a citizen scientist by spending a few moments recording which birds are visiting our feeders and contribute to bird conservation efforts. Call ahead to confirm availability; occasionally events may limit access. Donations appreciated.

11 Caroling in the Woods

7pm-8:30pm

Pick up a lantern and a song sheet and enjoy a beloved tradition at Baltimore Woods. Bring natural treats to hang for the birds and holiday treats to share with fellow carolers. Finish up the night with hot drinks in the Interpretive Center where a special guest may stop by to visit! This event is free for all. Please bring cookies to share.

14 Keep it Natural

"Not a Creature Was Stirring...."

10:30am

We'll discuss the wintering habits of several animals found in Central New York while we enjoy warming refreshments. Members \$5; nonmembers \$8.

17 Project FeederWatch

10am-3pm

See description on December 10th

18 Project FeederWatch

10am-3pm

See description on December 10th

18 Frost Moon Snowshoe Hike

7pm-8:30pm

Take a moonlit walk with a BWNC Naturalist under the year's last full moon. Enjoy the peaceful beauty of the season and pause to appreciate the solitude this time of year brings. Snowshoes included in the price of registration, adult and children's sizes available ages 4 and up. Come for a moonlit hike if there's no snow. Accommodates 12-25; registration required. Members \$5, family \$15; nonmembers \$8, family \$25.

20 Nature's Little Explorers

10am-11am

See sidebar for general description

Night Tree Join Baltimore Woods as we read *Night Tree* by Eve Bunting. Then create festive treats for our wildlife friends and use them to decorate our own winter tree here at Baltimore Woods. Members \$8/preschooler; nonmembers \$12.

24, 25 Interpretive Center Closed

As always, the trails and parking are free and open dawn to dusk. Happy Holidays!

27 Home School Expeditions

10am

No scheduled program, however, The Woods is open. Come enjoy a family snowshoe adventure. Members borrow snowshoes free of charge, nonmember rental fee \$5 per person.

29 Christmas Bird Count

9am-Noon

Please join us for our annual Christmas Bird Count, a tradition started in the United States by Audubon ornithologist Frank Chapman over a hundred years ago! Spend time counting birds at our feeder viewing area or join a Naturalist afield to look for birds in the woods. The data collected here at Baltimore Woods will be added to our bird archives and help us to see important bird population trends over time. Registration is required. Donations are appreciated.

31 Interpretive Center Closed

Please take advantage of our free parking and hiking trails, open dawn to dusk.

Volunteer Community Dinner

December 7th, 6-9pm

Baltimore Woods Nature Center invites our volunteers to a delicious holiday meal provided by BWNC. This is our chance to give back to the community that has given so much to us. Since there is limited space in the Interpretive Center, **we require that you register.** BWNC does truly appreciate all the time and support volunteers give, so please join us!

Baltimore Woods continues two popular children's programs:

Nature's Little Explorers

Join us for fun and discovery as we learn about the natural world around us! These guided explorations follow *Growing Up Wild* curriculum and are designed for children ages 3-5. Children must be accompanied by a parent or guardian. Registration required, accommodates 5-20 preschoolers. Members \$8/preschooler; nonmembers \$12. Programs occur every third Monday. Details of each month's programs are found within the calendar listings.

Home School Expeditions

Join BWNC educators as we discover the wonder and excitement of science in the great outdoors. Students must be accompanied by a parent or guardian. Siblings are welcome to attend but need to be registered. Registration required, accommodates 5-20 students. Members \$8/student; nonmembers \$12. Programs occur the fourth Monday of the month. Details of each month's programs are found within the calendar listings.

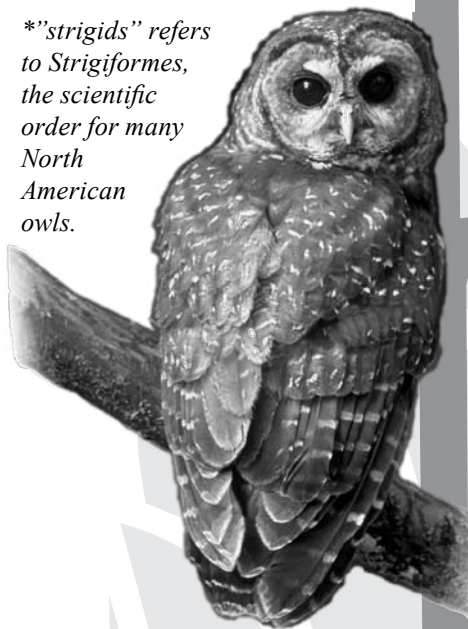
January Adventure Day Camp

The Hoot is On!

January 17th, 9am-4pm

Don't get barred inside this MLK day — winter is owl time at The Woods! Join us as we get the low down on frigid strigids*! You're sure to screech with delight at Cindy Page's live owl program. Tell your friends you saw-whet at The Woods! I'm talon you, this camp will be a hoot! \$40/child. Registration forms are available on our website, pre-registration is required. Before- and After-Care are available. Space (and bad owl puns) is limited so don't miss out!

*"strigids" refers to *Strigiformes*, the scientific order for many North American owls.



Medical Forms

Attention Parents! January marks a new year, which means it is time to renew your campers' medical forms for 2011. Starting January 1st, you can download the forms from our website at www.baltimorewoods.org.



January Calendar of Events

1 Happy 2011! Interpretive Center Closed
Work off those Holiday goodies on one of our beautiful nature trails, open dawn to dusk, with plenty of parking. The Interpretive Center will reopen January 3rd, at 9am.

Project FeederWatch
Fridays and Saturdays
January through April 10am-3pm
See description on December 10th

8 Seed Savers Workshop
10am-Noon
Missing your garden? Come to Baltimore Woods for a morning to look ahead to warmer days. You will hear about planting to attract wildlife, talk with local CSA growers, learn how to grow a row to fight hunger, and swap gardening stories, tricks, and tips. Bring your saved seeds to participate in the seed exchange! Registration required. Members \$10; nonmembers \$15.

10 Nature's Little Explorers
10am-11am
See general description, previous page
The Snowflake Bentley Story Did you know that no two snowflakes are alike? Come discover the wonder and beauty of snow crystals as we read the story of *Snow Flake Bentley*. After the story we will catch snowflakes on our handmade snowflake catchers. Members \$8/preschooler; nonmembers \$12.

11 Keep It Natural Snowshoe Hike
10:30am
BWNC Naturalists will lead a midwinter interpretive snowshoe hike on the Griffiths Trail. Winter's freeze provides a great opportunity to explore changes to the Griffiths Flat area made by our resident beavers. We'll bring hot drinks and a snack to enjoy along the way. Members \$5; nonmembers \$8. Please dress warmly.

15 Beginning Fly-Tying Workshop
10am-Noon
Let Baltimore Woods Naturalists show you the basics of fly-tying. This program is for children ages 8 and up — younger children may attend accompanied by a parent. \$20 members; \$30, nonmembers.

15 Beaver Snowshoe Hike
2pm-3:30pm
Bring the family and explore the trails on snowshoes. A BWNC Naturalist will lead a hike to the Griffiths Trail to check out the altered landscape engineered by our resident beavers. Learn about these industrious rodents

then head inside and warm up with toasty drinks and snacks. Accommodates 12-25; registration required. Members \$5, family \$15; nonmembers \$8, family \$25.

17 MLK Day of Service
10am-3pm
Join BWNC staff and community partners to honor Dr. Martin Luther King with a day of service, giving back to our community. Check our website, www.baltimorewoods.org, or email sarah@baltimorewoods.org for information.

17 Adventure Day Camp
9am-4pm
See side article for details

19 Weed and Feed
Noon
Join us for our monthly volunteer lunch featuring locally harvested foods. Thank you for everything you do for The Woods. We hope you will join us.

20 "Fresh": Local Harvest Dinner
6pm-8:30pm
Savor a dinner of foods grown in CNY and talk with the farmers who grew them. Afterwards, experience our local "flavor" while visiting with area bookstores, shops, and other businesses on-hand. Accommodates 18-60; register before January 15th. Members \$20; nonmembers \$30.

24 Home School Expeditions
2-3:30pm
See general description, previous page
Beaver Wars Did you know that wars have been fought right here in New York over our state mammal, the beaver? Learn about beaver adaptations and why they were so valuable to the European explorers. We will explore the history of the beaver trade, and go on a snowshoe expedition to visit a complex of beaver ponds here at Baltimore Woods. Members \$8/student; nonmembers \$12.

25 Annual Meeting & Potluck Dinner
See description on cover page

29 Nature in the City: Snowshoe Syracuse
10:30am-Noon
Join a BWNC Naturalist at Heath Park in Syracuse for a snowshoe hike. Learn snowshoe basics and explore one of the city's great parks. Meet at the Conifer Drive entrance. Snowshoe rentals \$5/person, children's sizes available for ages 4 and up. Accommodates 12-25; registration required. Donations appreciated.

February

Calendar of Events

Project FeederWatch

Fridays and Saturdays
January through April 10am-3pm
See description on December 10th

2 Groundhog Day

7pm-8pm

Will we have six more weeks of winter? What is that all about, anyway? This evening program explores the history of the midwinter traditions and lore, including our modern Groundhog Day celebration. Join us for this indoor program with light refreshments. Please register to attend. Members \$5, family \$15; nonmembers \$8, family \$25.

8 Keep it Natural

Field Trip to Erie Canal Museum
10:30am

Meet at Baltimore Woods and carpool to the Erie Canal Museum in Syracuse, NY. We'll visit the canal museum and the adjoining Syracuse Heritage Area Visitor Center to explore our local past. There is the possibility of stopping for lunch afterward, if there is interest. Members \$5; nonmembers \$8, for museum donation only. Donations to The Woods appreciated.

12 Saturday Fly-Tie

11am-Noon

See program description December 4th

12 Sweetheart Snowshoe

7pm-9pm *Program for Adults*

Bring your valentine for a romantic, lantern-lit snowshoe for two through the evening woods. Together, you'll discover romantic themes hidden along the trail, and share some quiet, reflective time outdoors. Then, warm up indoors with hot drinks and decadent desserts. Members \$20/couple; nonmembers \$30/couple.

16 Weed and Feed

Noon

Volunteers, come enjoy a lunch of locally harvested foods at Baltimore Woods on the third Wednesday of each month. BWNC greatly appreciates all you do to nurture place-based education opportunities in Central New York.

19 Project WET and WILD

9am-4pm

BWNC is pleased to host this educator workshop. Project WILD/Project WET provide educators the tools, training, and resources they need to bring the

environment into the classroom—and their students into the environment. Materials are multidisciplinary and follow state and national education standards. Accommodates up to 20 participants. Registration required by February 12th. Cost, \$15, includes lunch, Project WILD and Project WET materials, and workshop.

21 Nature's Little Explorers

10am-11am

See program description on December calendar page sidebar

Walking in a Winter Wonderland

Who has been scampering quietly over the snow? What animal left that footprint behind? Discover who has been walking through The Woods as we go on a snowshoe hike. Members \$8/preschooler; nonmembers \$12.

22-25 Tuesday through Friday

Adventure Day Camp

9am-4pm

See side article for details

26 Backyard Maple Sugaring

Workshop

1pm-3pm

For the price of a couple quarts of maple syrup, learn how to make your own for years to come. During this hands-on workshop, learn tips of the trade from maple syrup producers and get first-hand experience tapping trees in the Baltimore Woods sugarbush. Price includes a starter kit, with taps and tips. Accommodates 8-12; please register before February 19th. Members \$30; nonmembers \$45.

28 Home School Expeditions

10am-11am

See program description on December calendar page sidebar

Snow Stories Discover how to read the stories animals leave behind in nature. By learning the three P's (Place, Pattern, and Print) students will learn a story's setting, characters, and plot. BWNC educators use mounts, posters, books, and animal traces to teach the basics of animal tracking and predator/prey relationships. The program culminates with groups of students working together to create their own track stories using track stencils on poster size paper. Members \$8/student; nonmembers \$12.

February

Adventure Day Camp

February 22-25th

9am-4pm

Join us for Winter Break Camp in February for fun-packed days of discovery and adventure! \$40/child/day. Registration forms and daily descriptions are available on our website. Pre-registration is required. Before and after care are available. *Space is limited so don't miss out!*



Tuesday –
Ultimate Snow Day: The Baltimore Woods winter wonderland

Wednesday –
Secrets Lives of Winter Mammals

Thursday –
The Cold Crystal:

The science and wonder behind snow

Friday – Fire and Ice: *Capture the Flag* Game for the Ages



Baltimore Woods
(315) 673-1350
www.baltimorewoods.org

Join BWNC today!

Share your love of nature
GIFT MEMBERSHIPS
available at
Baltimore Woods Nature Center

Call (315)673-1350
to sign your friends up!

Baltimore Woods Nature Center offers the best ...

- nature observation and enjoyment
- flower, herb and wildflower gardens
- adventure nature day camps
- 6+ miles of hiking trails
- public programs year-round for seniors, adults, families and children
- art gallery with Members-Only exhibit
- bird-watching station
- Discovery Library for nature study
- educational exhibits
- volunteer opportunities in many areas

Annual Membership Level

- \$15 Senior/Student
- \$25 Individual
- \$40 Family
- \$75 Sustaining
- \$100 Patron
- \$250 Benefactor
- \$500 Philanthropist
- \$1,000 Life
- Donation Amount
(in addition to membership)
-

Make checks payable to:
Baltimore Woods Nature Center.
Visa and Mastercard accepted.

Return this coupon with payment to:
Baltimore Woods Nature Center
P.O. Box 133
Marcellus, NY 13108

Nature in the City

by Emma Anderson

Have you ever wondered what *Nature in the City* is? You know who sponsors the program, how many children we reach and maybe even about some of the awards it has won, but what does *Nature in the City* look like on a normal day?

If you were walking down the hallway in a *Nature in the City* school you might catch a glimpse of our fifth grade energy program, Bright Ideas. You peer through the window in the door and see students pushing a hand crank generator experiencing firsthand how energy is conserved and transformed while determining if a compact fluorescent or an incandescent light bulb takes more energy to light up. Other students in the classroom are trying to get a solar car to run using an LED flashlight while others are watching sugar dance as sound waves pulse.

Clapping from down the hall grabs your attention and you head toward the applause. A kindergartner has just used his sense of hearing to figure out who has crept quietly around him while he was blindfolded in the game Fox and Mouse. The kindergartners are learning about their five senses and how senses help humans and animals understand the world around them. Another round of Fox and Mouse is starting when you hear “oohs and ahhs” of amazement from outside.

You walk over to a window and look outside to see a class of first graders catching

snowflakes on snow catchers. The beautiful snow crystals are all unique solids with six sides. A first grader squeals with delight as she catches a large snow flake.



A Baltimore Woods Educator leads a school group in a snowshoe program.

Out on the playground you see a class of fourth graders snowshoeing. The fourth graders stop and peer down on the snow to take a closer look at tracks that are scattered across the open snow. “A squirrel has been hopping by,” declares a fourth grader. “You can tell,” he continues “because the track pattern indicates a hopper.” The other students confirm this statement and continue on their snowshoe hike.

You smile at all the great hands-on learning you see going on around you. You can continue your day proud that by being a Baltimore Woods Nature Center member you help support the great learning opportunities offered through *Nature in the City*.



Save the Date

Join us on Saturday, April 2nd, 2011 when Baltimore Woods Nature Center and Habitat Gardeners in Central New York, a chapter of Wild Ones, native plants, natural landscapes, co-host a full day of workshops by presenter Carolyn Summers. Summers is the author of *Designing Gardens with Flora of the American East*.

Summers will share her love of indigenous plants as she teaches you basic design concepts and styles by habitat. Geared to both the professional landscape designer and backyard gardener, these workshops are both informative and inspiring.

Watch our website for more information!

The Kid's Page

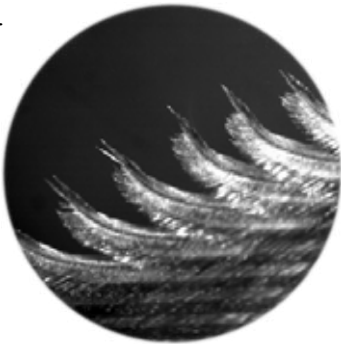
Focus on this...

Draw a line to match the close-up image on the left with its full-size picture on the right. Bonus points for correctly identifying each item!

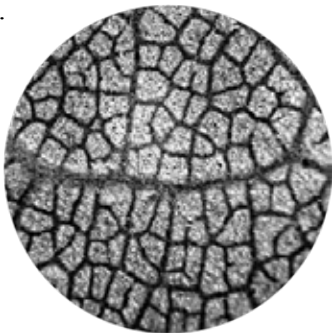
1.



2.

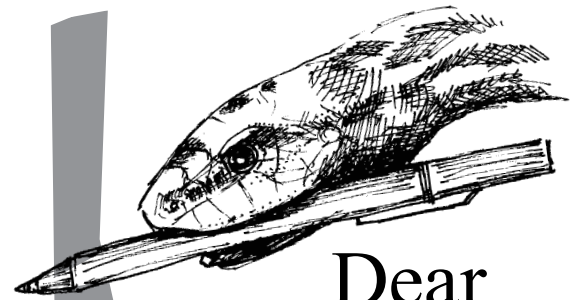


3.



Answers: Number 1 is a white spruce cone, hiding under each scale is a tiny winged seed. Number 2 is the leading edge of a great horned owl wing feather. Those little barbs help owls to fly with near silence. Number 3 shows the veins on the underside of a sugar maple leaf. The veins move sugar and water around the leaf.

Your turn: Take a magnifying lens with you on your next outdoor adventure. When you find something interesting, take a closer look and share your discovery with someone else!



Dear Miss Hiss

Dear Miss Hiss,
I heard you were getting some new neighbors! Who are they? Are you excited?

From,
Karl

Dear Karl,
Thanksssssss for writing to me! I am very excited to be getting some new neighbors! Four box turtles are moving into the Interpretive Center. They will help me with my visits to classes.

I have learned a little bit about box turtles so I am ready for my new friends. They are Eastern Box Turtles, native to New York State. They are called "box" turtles, because their shells can close up completely on both ends. They can hide inside their shells when they are frightened. Being able to close up completely helps to protect their soft heads, legs, and tails from predators.

As you may know, all turtles, including our box turtles, are cold-blooded. They like to pass the winter hibernating in the unfrozen dirt underground. They close up tight inside their shells, protecting their bodies during the coldest months of the year. My new turtle neighbors will also hibernate later this winter in a cool, dark area inside the Interpretive Center. I am glad I will get a chance to know them before they go to sleep until spring.

Thank you for your great questions. Please keep them coming!

Love,
Miss Hiss

Wish List



New volunteers always welcome for many projects

New hats, gloves for schoolchildren

Dustbuster

Enjoying the Local Harvest Year-round

by **Katie Mulverhill**

Imagine sinking your teeth into a piece of tender, juicy turkey breast followed by a bite of crisp, fresh spinach salad. Knowing this bountiful harvest comes from right here in CNY makes it taste even better; and you feel good knowing it is fresh and healthy.

Most likely we have all enjoyed a local meal like this on a warm summer night, but how many can claim to have done so in the middle of January?

Last January, nearly 60 people attended Baltimore Woods' first "Fresh" dinner featuring an array of locally produced food items ranging from grass fed beef, to roasted root vegetables, cheesy potato casserole and sweet peach cobbler made from home-canned peaches. Although the food was great, the highlight of the evening was meeting the men and women who produce this local harvest.



This year we plan to continue the tradition of embracing what is unique to our region year round by hosting the second annual "Fresh" dinner on Thursday, January 20th. This year we will expand our vision to encompass more of the unique local businesses that contribute to our local flavor. Enrich your winter experience by enjoying the local bookstores, movie theaters, restaurants, grocery stores, boutiques, and even nature centers, owned and operated by our friends and neighbors. We hope to see you there!



**Baltimore Woods
Nature Center**
Nature in your hands

**Non-profit Organization
U.S. Postage Paid
Marcellus,
New York
Permit Number 9**

ADDRESS SERVICE REQUESTED

Sunday

Monday

Tuesday

Wednesday

Thursday

Friday

Saturday

December

1

2

3

Saturday
Fly-Tie
11am-Noon
Project
FeederWatch
2pm-3pm

Drop off non-perishable items for the Marcellus Food Pantry at Baltimore Woods until December 20th.

5

Home School
Expeditions
10am

Volunteer
Community
Dinner
6pm

8



Project
FeederWatch
10am-3pm

Caroling
in the Woods
7pm-8:30pm

Screech owl pairs conserve heat by roosting in tree cavities during the day.

12

13

Keep It Natural
10:30am

15

16

Project
FeederWatch
10am-3pm

Project
FeederWatch
10am-3pm
Snowshoe Hike
7pm-8:30pm

19

Nature's Little
Explorers
10-11am



22

23

24

Interpretive Center
Closed for Christmas

25

In the Northern Hemisphere, the 2010 Winter Solstice occurs on December 21st, 6:38 PM ET. This marks the longest night of the year.

26

27

28

Christmas
Bird Count
9am-Noon

30

31

Interpretive
Center Closed

Christmas bird counts often find many migratory species still in Central New York.

January

Interpretive
Center Closed

2

3

4

5

6

Project
FeederWatch
10am-3pm

Project
FeederWatch
10am-3pm
Seed Savers
Workshop
10am-Noon

As a weather forecaster, the woolly bear caterpillar is no more reliable than the woodchuck.

9

Nature's Little
Explorers
10-11am

Keep It Natural
10:30am

12

13

Project
FeederWatch
10am-3pm

FeederWatch
10am-3pm
Fly-Tie
10am-Noon

In bad weather, turkeys conserve energy by laying low. They may roost for more than a week without feeding.

16

Adventure Day
Camp
9am-4pm
MLK
Day of Service
10am-3pm

18



Local Harvest
Dinner
6pm-8:30pm

Project
FeederWatch
10am-3pm

Snowshoe Hike
2pm-3:30pm

Project
FeederWatch
10am-3pm

23

Home School
Expeditions
2pm

Annual Meeting &
Potluck Dinner
7pm & 6pm

26

27

Project
FeederWatch
10am-3pm

Project
FeederWatch
10am-3pm

30

31



NITC
Snowshoe
Syracuse
10:30am-Noon

Ivory-colored poison ivy seeds are still on the vine and are a nutritious food for many birds.

February

Sunday	Monday	Tuesday	Wednesday	Thursday	Friday	Saturday
			Groundhog Day 7pm-8pm		Project FeederWatch 10am-3pm	Project FeederWatch 10am-3pm
		Keep It Natural 10:30am			Project FeederWatch 10am-3pm	FeederWatch 10am-3pm
Listen for the deep, penetrating hoots of courting great horned owls, one of the earliest birds to breed in CNY.						
			Weed and Feed Noon		 Project FeederWatch 10am-3pm Full Snow Moon	FeederWatch 10am-3pm
Flying Squirrels sometimes use birdhouses to make their winter nests.						
	Nature's Little Explorers 10-11am	Adventure Day Camp 9am-4pm			Project FeederWatch 10am-3pm	Project WET&WILD 9am-3pm
	Home School Expeditions 10-11am					Project FeederWatch 10am-3pm
						Backyard Maple Sugaring Workshop 1pm-3pm

Save the Date

**The Annual Meeting of
Baltimore Woods Nature Center
January 25th, 2010**

There will be a potluck dinner at 6pm, and the meeting will start at 7pm. The slate of nominees for the Board of Directors will be on our website by January 1st: www.baltimorewoods.org. All members in good standing are eligible to vote. The vote will occur at the meeting.

Reminder: Bird Seed Sale Ongoing

Bring the beauty and life of our feathered friends to your yard, while supporting Baltimore Woods Nature Center. Now it's twice as easy!

Here's How:

Shop for your birdseed at businesses that support The Woods. Cedar Craft Wild Bird Center at 495 Grant Avenue Road, Auburn, and Nightingale Mills at 4068 South Street, Marcellus, generously donate a percentage of birdseed purchases to Baltimore Woods Nature Center. Choose from their large selection of seed and suet while being inspired by their quality

products, displays, and knowledgeable staff!

Your donation is automatically calculated at Cedar Craft Wild Bird Center. At Nightingale Mills, drop your seed purchase receipt in the Baltimore Woods collection box to have it counted. If you need a second receipt, they will gladly provide you one.

We hope you will enjoy the wide selection of wild bird seed these two stores offer, and the added convenience of year-round availability. The birds, (squirrels) and BWNC thank you for your support. Please encourage your friends and neighbors to also support these businesses that give their support to The Woods.



SAVE THE DATE

January 25th, 2011
Annual Meeting: 7pm
Potluck Dinner: 6pm

All members are encouraged to attend.